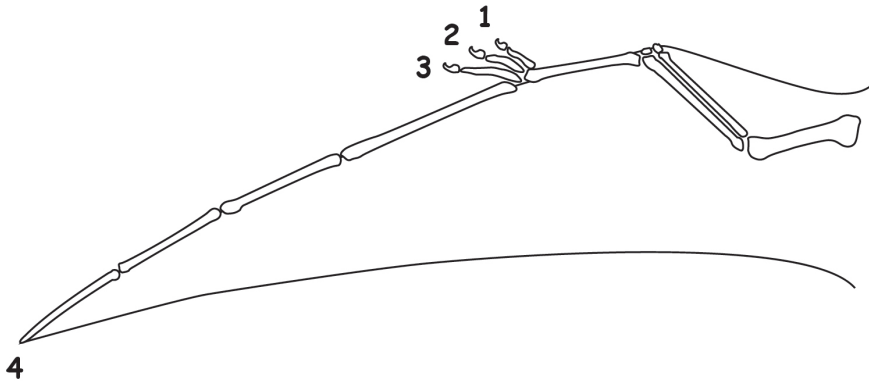


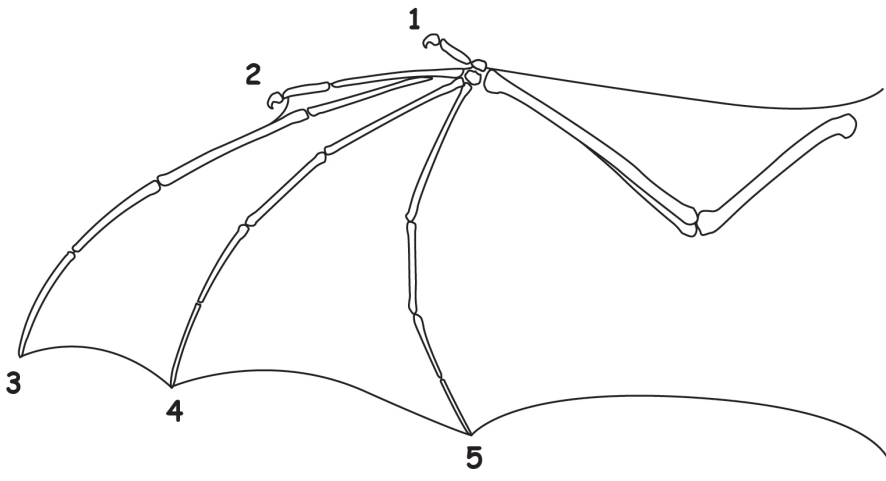
Wing Comparison: Pterosaur, Bat, and Bird

Compare the diagrams below showing variations in wing skeletal structure among pterosaurs, bats, and birds.



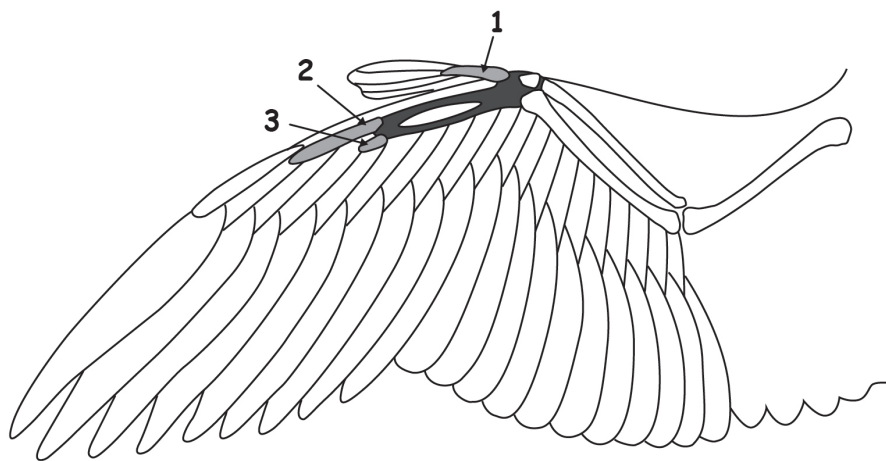
Pterosaur

A pterosaur moves its wings mainly by extending its elongated fourth finger.



Bat

A bat moves its wings mainly by extending fingers 2, 3, 4, and 5.



Bird

A bird moves its wings by moving bones that are attached to feathers, which extend outward.

← Half Wingspan →

Adapted from Chatterjee and Templin, 2004; Langston, 1981