

NATGEO.ORG/EXPLORERMAG | VOL. 20 NO. 4

 NATIONAL
GEOGRAPHIC



Young

Explorer

SCOUT



Dragonflies ₂

Water All Around **8** Too Many Snails **16**

Dragonfly

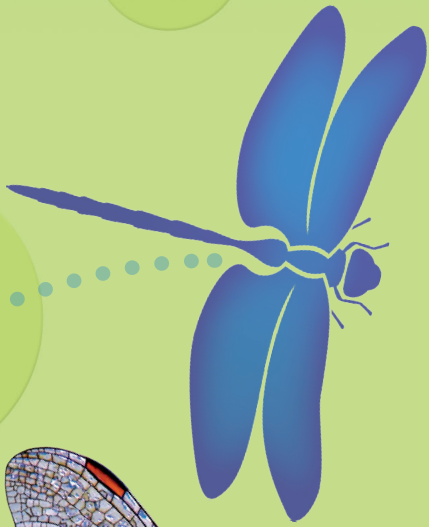
Fly up. Fly down.
A dragonfly flies all around.
Learn more about this insect.



flies

Explore Wildlife





Dragonflies have large eyes.
They have four wings and six legs.



They are good hunters.
They eat flies and other bugs.

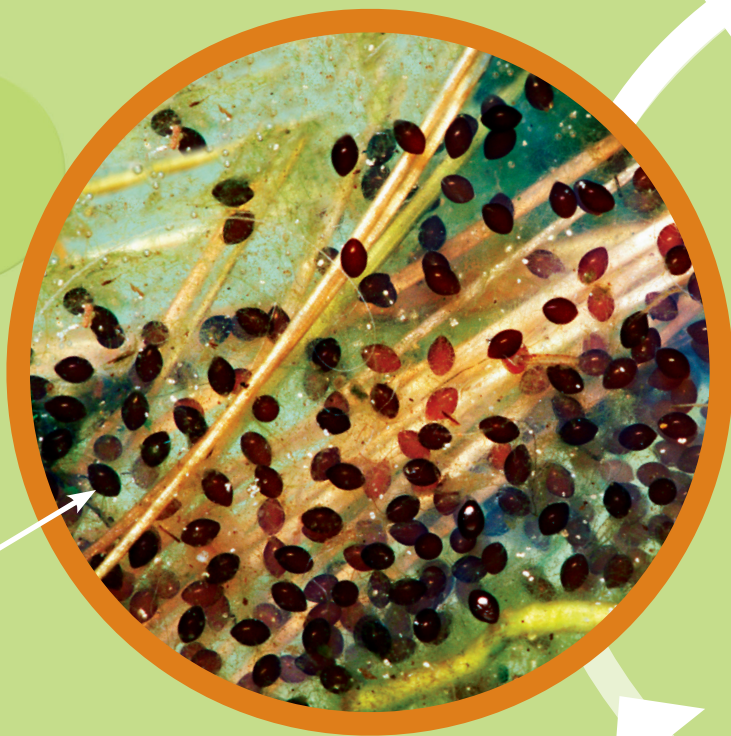
A Dragonfly Growth Cycle

A dragonfly changes as it grows.

1 An adult dragonfly lays eggs in water.



egg



4 The larva's skin splits. An adult dragonfly comes out. Now, it has wings to fly.



rows



2 Each egg hatches.
A larva comes out.
It lives and grows in water.



3 The larva climbs out of
the water. Soon, it will
change again.

Explore Earth

Water is on the go.
See how it moves.
See how it changes forms.



Water All



ll Around



ocean



**You can see
Earth's big,
blue oceans
from space.**

Water covers most of Earth.

Most of the water is in the oceans.

Water flows down rivers, too.
It fills ponds and lakes.



lake

Water has three forms.

It can be a liquid, solid, or gas.

liquid



Liquid water flows.
The water you drink
is a liquid.



solid



If liquid water gets
cold, it can freeze.
It turns into a solid,
like ice.



gas



If liquid water gets
hot, it can change into
a gas. Steam is a gas.

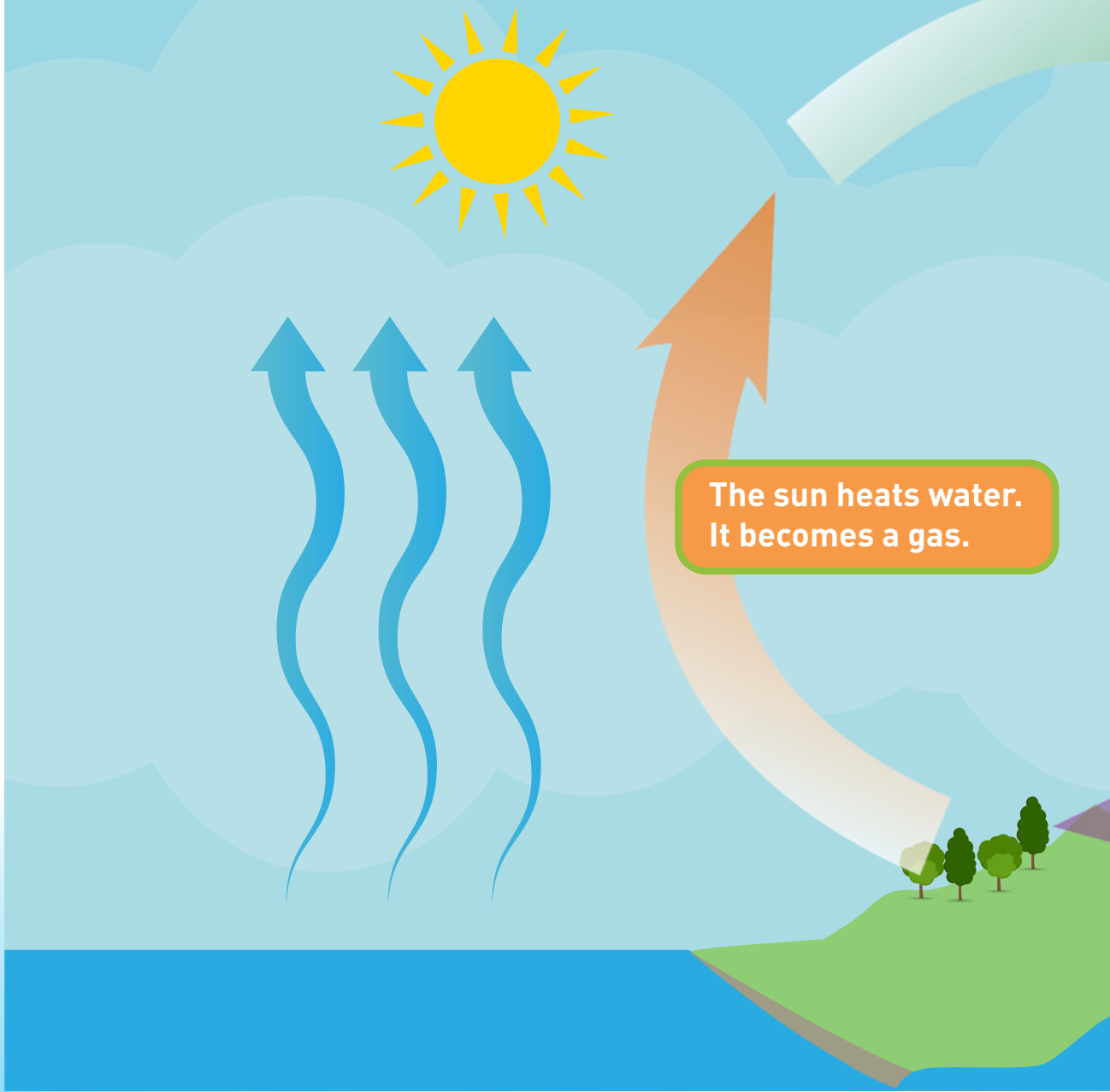





waterfall

Water moves from the land to the air.
It moves as a liquid, solid, or gas.
It moves in the water cycle.

The Water Cycle



The sun heats water. The water becomes a gas. The gas cools. It turns into drops of water.




The gas cools. It turns
into drops of water.
Drops form clouds.

Water falls from clouds.

The drops of water form clouds.
The drops get bigger.
They fall as rain or snow.

Too Many Snails



This is Molly and John.
They are farmers.

Solve Problems



Molly and John
Chester are the
farmers in the film
*The Biggest
Little Farm.*

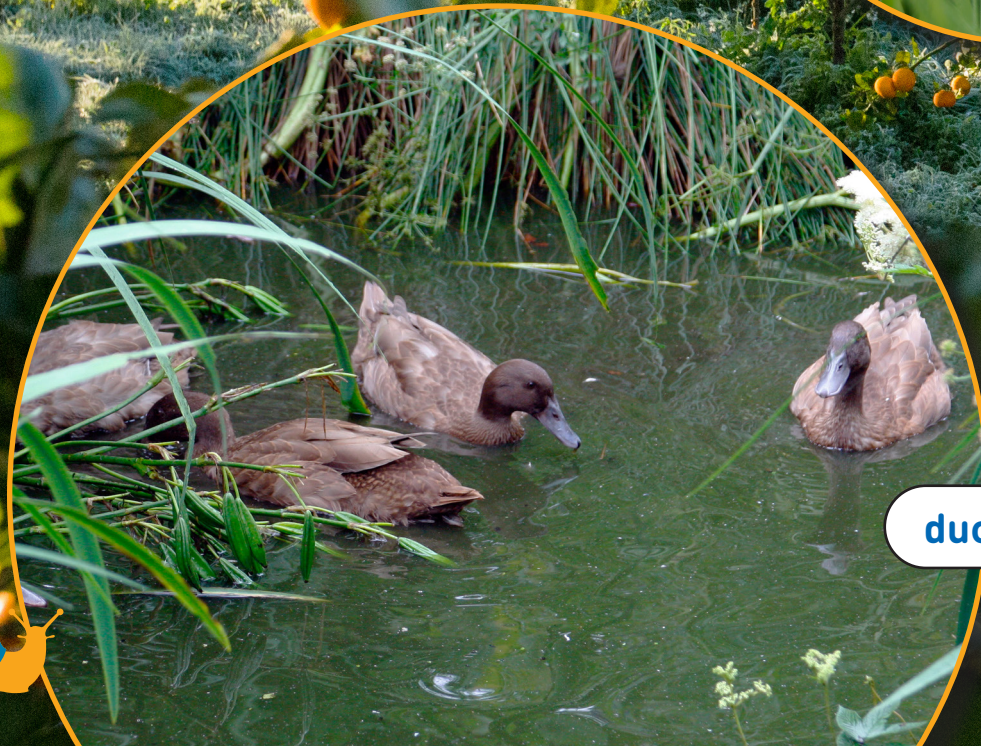
Molly and John have farm animals.



sheep



chicken



ducks



oranges

Molly and John grow plants.
They grow fruits on trees.

Once, Molly and John found snails.
The snails were eating the trees.

lemons

snails





This was a problem.
There were too many snails.
They were hurting the trees.

Molly and John had an idea.
They moved the ducks to the trees.
Ducks love snails!



Molly and John solved the problem.
The ducks ate up the snails!
This helped the trees grow.



Think of a
problem you had.
How did you
solve it?

Words to Explore

Say each word out loud. Match each word to a picture and meaning. Check your answers.

adult
gas (water vapor)

cycle
larva



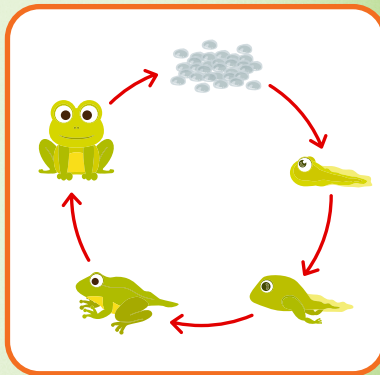
1 a young form of an insect



2 a fully grown animal



3 a substance that is like air and has no fixed shape



4 events or actions that happen again and again in the same order

Answers: 1. larva; 2. adult; 3. gas (water vapor); 4. cycle

DEVELOPMENT

Senior Director, Curriculum & Content Innovation: Suzanne Simons
Senior Manager, Content Design: Karen Thompson
Manager, Content, *Explorer*: Brenna Maloney
Manager, Content, *Young Explorer* and digital magazines: Corinne Rucker
Manager, Editorial Rights & Research: Jay Sumner
Specialist, Program Support: Jean Cantu
Specialist, Content Design: Patrick Cavanagh
Digital Design: Schuttelaar & Partners

BUSINESS AND OPERATIONS

Senior Manager, Cross Cutting: Emily Mallozzi
Manager: Erin West Kephart

NATIONAL GEOGRAPHIC EDUCATION

VP, Educator Initiatives: Jennifer Aguilar
VP, Youth Initiatives: Lina Gomez
VP, Education Content: Kim Hulse
VP, Global Delivery: Sandra Licon

PUBLISHED BY NATIONAL GEOGRAPHIC SOCIETY

CEO: Jill Tiefenthaler
President & COO: Mike Ullica
EVP, General Counsel & Corporate Secretary: Angelo Grima
EVP, Chief Education Officer: Dr. Vicki Phillips
Chief Administrative Officer: Tara Buncher
SVP, Chief Storytelling Officer: Kaitlin Yarnall
Chief Human Resources Officer: Mara Dell

NATIONAL GEOGRAPHIC YOUNG EXPLORER

(ISSN 1930-8116) is published five times during the school year—September–October, November–December, January–February, March, and April—by National Geographic Society, 1145 17th Street NW, Washington, D.C. 20036.

Copyright © 2021 National Geographic Society. All Rights Reserved. Reproduction of the whole or any part of the contents of NATIONAL GEOGRAPHIC YOUNG EXPLORER without written permission is prohibited. National Geographic, NATIONAL GEOGRAPHIC YOUNG EXPLORER, and the Yellow Border are trademarks of the National Geographic Society.

Cover: a dragonfly

MARCH 2021

COVER: BRIAN KUSHNER/ALAMY STOCK PHOTO. DRAGONFLIES: PAGES 2-3 ANDREAS HERRMANN/AGE FOTOSTOCK; PAGES 4-5 (LEFT) MCPHOTO/MAS/AGE FOTOSTOCK; (CENTER) BILL BEATTY; (RIGHT) J. MEUL-VAN CAUTEREN/AGE FOTOSTOCK; PAGES 6-7 (EGGS) RENE KREKELS/NIS/MINDEN PICTURES; (LARVA UNDERWATER) WILDLIFE GMBH/ALAMY STOCK PHOTO; (LARVA ON PLANT) LARS S. MADSEN/ALAMY STOCK PHOTO; (ADULT) H.J. NETZ/AGE FOTOSTOCK. WATER ALL AROUND: PAGES 8-9 ARIEL SKELLEY/DIGITALVISION/GETTY IMAGES; PAGES 10-11 (OCEAN) RICHARD EDEN/MOMENT/GETTY IMAGES; (EARTH) NASA EARTH OBSERVATORY; (WATER DROP ILLUSTRATIONS) NADZIN/SHUTTERSTOCK; (BEAR) © MICHEL ROGGO/NATUREPL.COM; PAGES 12-13 (GLASS OF WATER) ALTER-EGO/SHUTTERSTOCK; (ICICLES) MARTIN RUEGNER/STONE/GETTY IMAGES; (STEAM) TOA55/SHUTTERSTOCK; ((ILLUSTRATIONS) ANDRIL SYMONENKO/SHUTTERSTOCK; (WATERFALL) MANTAPHOTO/ISTOCK/GETTY IMAGES PLUS; PAGES 14-15 (WATER CYCLE) STOCKBURIN/SHUTTERSTOCK; (WATER DROP ILLUSTRATIONS) NADZIN/SHUTTERSTOCK. TOO MANY SNAILS; PAGES 16-23 (SNAIL ILLUSTRATIONS) NG STAFF; PAGES 16-17 (BIG PHOTO) COURTESY OF APRICOT LANE FARMS; (INSET) YVETTE ROMAN PHOTOGRAPHY; PAGES 18-19 (DUCK SWIMMING) REX MAY/ALAMY STOCK PHOTO; ALL OTHER PHOTOS COURTESY OF APRICOT LANE FARMS; PAGES 20-21 (MOLLY PICKING FRUIT) YVETTE ROMAN PHOTOGRAPHY; ALL OTHER PHOTOS COURTESY OF APRICOT LANE FARMS; PAGES 22-23 COURTESY OF APRICOT LANE FARMS. WORDS TO EXPLORE: PAGE 24 (LARVA) WILDLIFE GMBH/ALAMY STOCK PHOTO; (GORILLAS) STEPHANIELLEN/SHUTTERSTOCK; (STEAM) TOA55/SHUTTERSTOCK; (FROG CYCLE) AEKIKUIS/SHUTTERSTOCK.