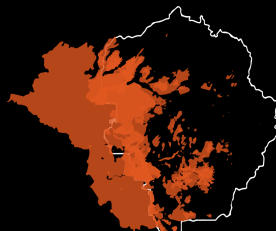


WHAT CAUSES FIRES?

14.8% of all fires

Yosemite National Park CA

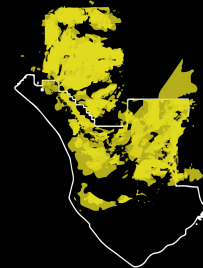
California experiences a mixture of prescribed fires and wildfires. Experts in the region are concerned about the **lengthening fire season and stress repeated wildfires** put on the landscape.



19.4% of all fires

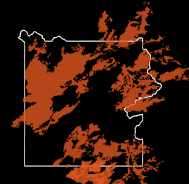
- 9.7% Everglades National Park FL
- 9.7% Big Cypress National Preserve FL

Fire is an important part of the ecosystem of south Florida, in moderation. In fact, **fire protects native species** from encroaching invasive species, such as mangroves, to help preserve a diverse natural ecosystem.



PARKS MOST AFFECTED BY FIRES

While many national park lands have one or more wildland fires each year, only a handful of parks are heavily affected by wildland fires.



36% of the park burned from June to September in a mix of natural- and human-caused fires. **The park experienced the worst drought in its history that summer.**

Yellowstone National Park fires of 1988

WILDLAND FIRES IN U.S. NATIONAL PARKS

number of fires per year since 1881
fire size per year since 1881

